

Modes of the Major Scales

tabs for the 12-hole diminished chromatic in A

Jason Rogers

C Major/Ionian, intervals: 1 2 3 4 5 6 7, Type I, Gamma, Hybrid Note: A

2 -2 3s -3 4s -4s -5 6 6 -6 7s -7 8s -8s -9 10

3

10 -9 -8s 8s -7 7s -6 6 6 -5 -4s 4s -3 3s -2 2

5 D Dorian, intervals: 1 2 b3 4 5 6 b7, Type III, Gamma, Hybrid Note: A

-2 3s -3 4s -4s -5 6 -6 -6 7s -7 8s -8s -9 10 -10

7

-10 10 -9 -8s 8s -7 7s -6 -6 6 -5 -4s 4s -3 3s -2

9 E Phrygian, intervals: 1 b2 b3 4 5 b6 b7, Type II, Gamma, Hybrid Note: A

3s -3 4s -4s -5 6 -6 7s 7s -7 8s -8s -9 10 -10 11s

11

11s -10 10 -9 -8s 8s -7 7s 7s -6 6 -5 -4s 4s -3 3s

13 F Lydian, intervals: 1 2 3 #4 5 6 7, Type III, Gamma, Hybrid Note: A

-3 4s -4s -5 6 -6 7s -7 -7 8s -8s -9 10 -10 11s -11

15

-11 11s -10 10 -9 -8s 8s -7 -7 7s -6 6 -5 -4s 4s -3

17 G Mixolydian, intervals: 1 2 3 4 5 6 b7, Type II, Gamma, Hybrid Note: A

4s -4s -5 6 -6 7s -7 8s 8s -8s -9 10 -10 11s -11 12s

Modes of the Major Scales
 tabs for the 12-hole diminished chromatic in A

19

12s -11 11s -10 10 -9 -8s 8s 8s -7 7s -6 6 -5 -4s 4s

A Minor/Aeolian, intervals: 1 2 b3 4 5 b6 b7, Type I, Gamma, Hybrid Note: A

21

5 -5 6 -6 7s -7 8s -8s 9 -9 10 -10 11s -11 12s -12s

23

-12s 12s -11 11s -10 10 -9 9 -8s 8s -7 7s -6 6 -5 5

B Locrian, intervals: 1 b2 b3 4 b5 b6 b7, Type III, Gamma, Hybrid Note: A

25

-1 2 -2 3s -3 4s -4s -5 -5 6 -6 7s -7 8s -8s -9

27

-9 -8s 8s -7 7s -6 6 -5 -5 -4s 4s -3 3s -2 2 -1

G Major/Ionian, intervals: 1 2 3 4 5 6 7, Type II, Alpha, Hybrid Note: A

29

4s -4s -5 6 -6 7s -7s 8s 8s -8s -9 10 -10 11s -11s 12s

31

12s -11s 11s -10 10 -9 -8s 8s 8s -7s 7s -6 6 -5 -4s 4s

A Dorian, intervals: 1 2 b3 4 5 6 b7, Type I, Alpha, Hybrid Note: A

33

1 -1 2 -2 3s -3s 4s -4s 5 -5 6 -6 7s -7s 8s -8s

35

-8s 8s -7s 7s -6 6 -5 5 -4s 4s -3s 3s -2 2 -1 1

Modes of the Major Scales
tabs for the 12-hole diminished chromatic in A

37 B Phrygian, intervals: 1 b2 b3 4 5 b6 b7, Type III, Alpha, Hybrid Note: A



41 C Lydian, intervals: 1 2 3 #4 5 6 7, Type I, Alpha, Hybrid Note: A



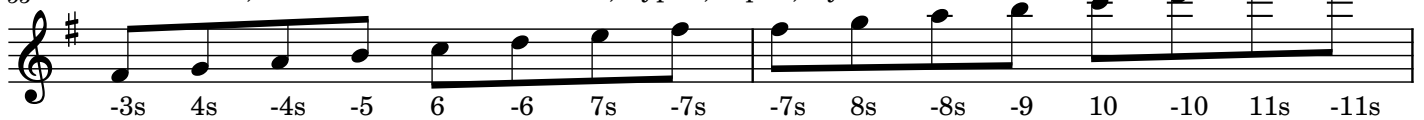
45 D Mixolydian, intervals: 1 2 3 4 5 6 b7, Type III, Alpha, Hybrid Note: A



49 E Minor/Aeolian, intervals: 1 2 b3 4 5 b6 b7, Type II, Alpha, Hybrid Note: A



53 F# Locrian, intervals: 1 b2 b3 4 b5 b6 b7, Type I, Alpha, Hybrid Note: A



Modes of the Major Scales
 tabs for the 12-hole diminished chromatic in A

55

-11s 11s -10 10 -9 -8s 8s -7s -7s 7s -6 6 -5 -4s 4s -3s

57 D Major/Ionian, intervals: 1 2 3 4 5 6 7, Type III, Beta, Hybrid Note: A

-2 3s -3s 4s -4s -5 6s -6 -6 7s -7s 8s -8s -9 10s -10

59

-10 10s -9 -8s 8s -7s 7s -6 -6 6s -5 -4s 4s -3s 3s -2

61 E Dorian, intervals: 1 2 b3 4 5 6 b7, Type II, Beta, Hybrid Note: A

3s -3s 4s -4s -5 6s -6 7s 7s -7s 8s -8s -9 10s -10 11s

63

11s -10 10s -9 -8s 8s -7s 7s 7s -6 6s -5 -4s 4s -3s 3s

65 F# Phrygian, intervals: 1 b2 b3 4 5 b6 b7, Type I, Beta, Hybrid Note: A

-3s 4s -4s -5 6s -6 7s -7s -7s 8s -8s -9 10s -10 11s -11s

67

-11s 11s -10 10s -9 -8s 8s -7s -7s 7s -6 6s -5 -4s 4s -3s

69 G Lydian, intervals: 1 2 3 #4 5 6 7, Type II, Beta, Hybrid Note: A

4s -4s -5 6s -6 7s -7s 8s 8s -8s -9 10s -10 11s -11s 12s

71

12s -11s 11s -10 10s -9 -8s 8s 8s -7s 7s -6 6s -5 -4s 4s

Modes of the Major Scales
 tabs for the 12-hole diminished chromatic in A

73 A Mixolydian, intervals: 1 2 3 4 5 6 b7, Type I, Beta, Hybrid Note: A

75

77 B Minor/Aeolian, intervals: 1 2 b3 4 5 b6 b7, Type III, Beta, Hybrid Note: A

79

81 C# Locrian, intervals: 1 b2 b3 4 b5 b6 b7, Type II, Beta, Hybrid Note: A

83

85 A Major/Ionian, intervals: 1 2 3 4 5 6 7, Type I, Gamma, Hybrid Note: F#

87

89 B Dorian, intervals: 1 2 b3 4 5 6 b7, Type III, Gamma, Hybrid Note: F#

Modes of the Major Scales
 tabs for the 12-hole diminished chromatic in A

91

-9 9 -8 -7s 7s -6 6s -5 -5 5 -4 -3s 3s -2 2s -1

93 C# Phrygian, intervals: 1 b2 b3 4 5 b6 b7, Type II, Gamma, Hybrid Note: F#

2s -2 3s -3s -4 5 -5 6s 6s -6 7s -7s -8 9 -9 10s

95

10s -9 9 -8 -7s 7s -6 6s 6s -5 5 -4 -3s 3s -2 2s

97 D Lydian, intervals: 1 2 3 #4 5 6 7, Type III, Gamma, Hybrid Note: F#

-2 3s -3s -4 5 -5 6s -6 -6 7s -7s -8 9 -9 10s -10

99

-10 10s -9 9 -8 -7s 7s -6 -6 6s -5 5 -4 -3s 3s -2

101 E Mixolydian, intervals: 1 2 3 4 5 6 b7, Type II, Gamma, Hybrid Note: F#

3s -3s -4 5 -5 6s -6 7s 7s -7s -8 9 -9 10s -10 11s

103

11s -10 10s -9 9 -8 -7s 7s 7s -6 6s -5 5 -4 -3s 3s

105 F# Minor/Aeolian, intervals: 1 2 b3 4 5 b6 b7, Type I, Gamma, Hybrid Note: F#

4 -4 5 -5 6s -6 7s -7s 8 -8 9 -9 10s -10 11s -11s

107

-11s 11s -10 10s -9 9 -8 8 -7s 7s -6 6s -5 5 -4 4

Modes of the Major Scales
 tabs for the 12-hole diminished chromatic in A

109 G# Locrian, intervals: 1 b2 b3 4 b5 b6 b7, Type III, Gamma, Hybrid Note: F#

111

113 E Major/Ionian, intervals: 1 2 3 4 5 6 7, Type II, Alpha, Hybrid Note: F#

115

117 F# Dorian, intervals: 1 2 b3 4 5 6 b7, Type I, Alpha, Hybrid Note: F#

119

121 G# Phrygian, intervals: 1 b2 b3 4 5 b6 b7, Type III, Alpha, Hybrid Note: F#

123

125 A Lydian, intervals: 1 2 3 #4 5 6 7, Type I, Alpha, Hybrid Note: F#

Modes of the Major Scales
 tabs for the 12-hole diminished chromatic in A

127

9 -8 -7s 7s -6s 6s -5 5 5 -4 -3s 3s -2s 2s -1 1

129 B Mixolydian, intervals: 1 2 3 4 5 6 b7, Type III, Alpha, Hybrid Note: F#

-1 2s -2s 3s -3s -4 5 -5 -5 6s -6s 7s -7s -8 9 -9

131

-9 9 -8 -7s 7s -6s 6s -5 -5 5 -4 -3s 3s -2s 2s -1

133 C# Minor/Aeolian, intervals: 1 2 b3 4 5 b6 b7, Type II, Alpha, Hybrid Note: F#

2s -2s 3s -3s -4 5 -5 6s 6s -6s 7s -7s -8 9 -9 10s

135

10s -9 9 -8 -7s 7s -6s 6s 6s -5 5 -4 -3s 3s -2s 2s

137 D# Locrian, intervals: 1 b2 b3 4 b5 b6 b7, Type I, Alpha, Hybrid Note: F#

-2s 3s -3s -4 5 -5 6s -6s -6s 7s -7s -8 9 -9 10s -10s

139

-10s 10s -9 9 -8 -7s 7s -6s -6s 6s -5 5 -4 -3s 3s -2s

141 B Major/Ionian, intervals: 1 2 3 4 5 6 7, Type III, Beta, Hybrid Note=F#

-1 2s -2s 3s -3s -4 5s -5 -5 6s -6s 7s -7s -8 9s -9

143

-9 9s -8 -7s 7s -6s 6s -5 -5 5s -4 -3s 3s -2s 2s -1

Modes of the Major Scales
 tabs for the 12-hole diminished chromatic in A

145 C# Dorian, intervals: 1 2 b3 4 5 6 b7, Type II, Beta, Hybrid Note: F#

2s -2s 3s -3s -4 5s -5 6s 6s -6s 7s -7s -8 9s -9 10s

147

10s -9 9s -8 -7s 7s -6s 6s 6s -5 5s -4 -3s 3s -2s 2s

149 D# Phrygian, intervals: 1 b2 b3 4 5 b6 b7, Type I, Beta, Hybrid Note: F#

-2s 3s -3s -4 5s -5 6s -6s -6s 7s -7s -8 9s -9 10s -10s

151

-10s 10s -9 9s -8 -7s 7s -6s -6s 6s -5 5s -4 -3s 3s -2s

153 E Lydian, intervals: 1 2 3 #4 5 6 7, Type II, Beta, Hybrid Note: F#

3s -3s -4 5s -5 6s -6s 7s 7s -7s -8 9s -9 10s -10s 11s

155

11s -10s 10s -9 9s -8 -7s 7s 7s -6s 6s -5 5s -4 -3s 3s

157 F# Mixolydian, intervals: 1 2 3 4 5 6 b7, Type I, Beta, Hybrid Note: F#

4 -4 5s -5 6s -6s 7s -7s 8 -8 9s -9 10s -10s 11s -11s

159

-11s 11s -10s 10s -9 9s -8 8 -7s 7s -6s 6s -5 5s -4 4

161 G# Minor/Aeolian, intervals: 1 2 b3 4 5 b6 b7, Type III, Beta, Hybrid Note: F#

-4 5s -5 6s -6s 7s -7s -8 -8 9s -9 10s -10s 11s -11s -12

Modes of the Major Scales
tabs for the 12-hole diminished chromatic in A

163

-12 -11s 11s -10s 10s -9 9s -8 -8 -7s 7s -6s 6s -5 5s -4

165 A# Locrian, intervals: 1 b2 b3 4 b5 b6 b7, Type II, Beta, Hybrid Note: F#

1s -1 2s -2s 3s -3s -4 5s 5s -5 6s -6s 7s -7s -8 9s

167

9s -8 -7s 7s -6s 6s -5 5s 5s -4 -3s 3s -2s 2s -1 1s

169 Gb Major/Ionian, intervals: 1 2 3 4 5 6 7, Type I, Gamma, Hybrid Note: Eb

4 -4 5s -5 6s -6s -7 8 8 -8 9s -9 10s -10s -11 12

171

12 -11 -10s 10s -9 9s -8 8 8 -7 -6s 6s -5 5s -4 4

173 Ab Dorian, intervals: 1 2 b3 4 5 6 b7, Type III, Gamma, Hybrid Note: Eb

-4 5s -5 6s -6s -7 8 -8 -8 9s -9 10s -10s -11 12 -12

175

-12 12 -11 -10s 10s -9 9s -8 -8 8 -7 -6s 6s -5 5s -4

177 Bb Phrygian, intervals: 1 b2 b3 4 5 b6 b7, Type II, Gamma, Hybrid Note: Eb

1s -1 2s -2s -3 4 -4 5s 5s -5 6s -6s -7 8 -8 9s

179

9s -8 8 -7 -6s 6s -5 5s 5s -4 4 -3 -2s 2s -1 1s

Modes of the Major Scales
tabs for the 12-hole diminished chromatic in A

181 Cb Lydian, intervals: 1 2 3 #4 5 6 7, Type III, Gamma, Hybrid Note: Eb

183

185 Db Mixolydian, intervals: 1 2 3 4 5 6 b7, Type II, Gamma, Hybrid Note: Eb

187

189 Eb Minor/Aeolian, intervals: 1 2 b3 4 5 b6 b7, Type I, Gamma, Hybrid Note: Eb

191

193 F Locrian, intervals: 1 b2 b3 4 b5 b6 b7, Type III, Gamma, Hybrid Note: Eb

195

197 Db Major/Ionian, intervals: 1 2 3 4 5 6 7, Type II, Alpha, Hybrid Note: Eb

Modes of the Major Scales
tabs for the 12-hole diminished chromatic in A

199

10s -9s 9s -8 8 -7 -6s 6s 6s -5s 5s -4 4 -3 -2s 2s

201 Eb Dorian, intervals: 1 2 b3 4 5 6 b7, Type I, Alpha, Hybrid Note: Eb

3 -3 4 -4 5s -5s 6s -6s 7 -7 8 -8 9s -9s 10s -10s

203

-10s 10s -9s 9s -8 8 -7 7 -6s 6s -5s 5s -4 4 -3 3

205 F Phrygian, intervals: 1 b2 b3 4 5 b6 b7, Type III, Alpha, Hybrid Note: Eb

-3 4 -4 5s -5s 6s -6s -7 -7 8 -8 9s -9s 10s -10s -11

207

-11 -10s 10s -9s 9s -8 8 -7 -7 -6s 6s -5s 5s -4 4 -3

209 Gb Lydian, intervals: 1 2 3 #4 5 6 7, Type I, Alpha, Hybrid Note: Eb

4 -4 5s -5s 6s -6s -7 8 8 -8 9s -9s 10s -10s -11 12

211

12 -11 -10s 10s -9s 9s -8 8 8 -7 -6s 6s -5s 5s -4 4

213 Ab Mixolydian, intervals: 1 2 3 4 5 6 b7, Type III, Alpha, Hybrid Note: Eb

-4 5s -5s 6s -6s -7 8 -8 -8 9s -9s 10s -10s -11 12 -12

215

-12 12 -11 -10s 10s -9s 9s -8 -8 8 -7 -6s 6s -5s 5s -4

Modes of the Major Scales
 tabs for the 12-hole diminished chromatic in A

217 Bb Minor/Aeolian, intervals: 1 2 b3 4 5 b6 b7, Type II, Alpha, Hybrid Note: Eb

1s -1s 2s -2s -3 4 -4 5s 5s -5s 6s -6s -7 8 -8 9s

219

9s -8 8 -7 -6s 6s -5s 5s 5s -4 4 -3 -2s 2s -1s 1s

221 C Locrian, intervals: 1 b2 b3 4 b5 b6 b7, Type I, Alpha, Hybrid Note: Eb

-1s 2s -2s -3 4 -4 5s -5s -5s 6s -6s -7 8 -8 9s -9s

223

-9s 9s -8 8 -7 -6s 6s -5s -5s 5s -4 4 -3 -2s 2s -1s

225 Ab Major/Ionian, intervals: 1 2 3 4 5 6 7, Type III, Beta, Hybrid Note: Eb

-4 5s -5s 6s -6s -7 8s -8 -8 9s -9s 10s -10s -11 12s -12

227

-12 12s -11 -10s 10s -9s 9s -8 -8 8s -7 -6s 6s -5s 5s -4

229 Bb Dorian, intervals: 1 2 b3 4 5 6 b7, Type II, Beta, Hybrid Note: Eb

1s -1s 2s -2s -3 4s -4 5s 5s -5s 6s -6s -7 8s -8 9s

231

9s -8 8s -7 -6s 6s -5s 5s 5s -4 4s -3 -2s 2s -1s 1s

233 C Phrygian, intervals: 1 b2 b3 4 5 b6 b7, Type I, Beta, Hybrid Note: Eb

-1s 2s -2s -3 4s -4 5s -5s -5s 6s -6s -7 8s -8 9s -9s

Modes of the Major Scales
tabs for the 12-hole diminished chromatic in A

235

-9s 9s -8 8s -7 -6s 6s -5s -5s 5s -4 4s -3 -2s 2s -1s

237 Db Lydian, intervals: 1 2 3 #4 5 6 7, Type II, Beta, Hybrid Note: Eb

2s -2s -3 4s -4 5s -5s 6s 6s -6s -7 8s -8 9s -9s 10s

239

10s -9s 9s -8 8s -7 -6s 6s 6s -5s 5s -4 4s -3 -2s 2s

241 Eb Mixolydian, intervals: 1 2 3 4 5 6 b7, Type I, Beta, Hybrid Note: Eb

3 -3 4s -4 5s -5s 6s -6s 7 -7 8s -8 9s -9s 10s -10s

243

-10s 10s -9s 9s -8 8s -7 7 -6s 6s -5s 5s -4 4s -3 3

245 F Minor/Aeolian, intervals: 1 2 b3 4 5 b6 b7, Type III, Beta, Hybrid Note: Eb

-3 4s -4 5s -5s 6s -6s -7 -7 8s -8 9s -9s 10s -10s -11

247

-11 -10s 10s -9s 9s -8 8s -7 -7 -6s 6s -5s 5s -4 4s -3

249 G Locrian, intervals: 1 b2 b3 4 b5 b6 b7, Type II, Beta, Hybrid Note: Eb

4s -4 5s -5s 6s -6s -7 8s 8s -8 9s -9s 10s -10s -11 12s

251

12s -11 -10s 10s -9s 9s -8 8s 8s -7 -6s 6s -5s 5s -4 4s

Modes of the Major Scales
tabs for the 12-hole diminished chromatic in A

253 Eb Major/Ionian, intervals: 1 2 3 4 5 6 7, Type I, Gamma, Hybrid Note: C

3 -3 4s -4 5s -5s -6 7 7 -7 8s -8 9s -9s -10 11

255

11 -10 -9s 9s -8 8s -7 7 7 -6 -5s 5s -4 4s -3 3

257 F Dorian, intervals: 1 2 b3 4 5 6 b7, Type III, Gamma, Hybrid Note: C

-3 4s -4 5s -5s -6 7 -7 -7 8s -8 9s -9s -10 11 -11

259

-11 11 -10 -9s 9s -8 8s -7 -7 7 -6 -5s 5s -4 4s -3

261 G Phrygian, intervals: 1 b2 b3 4 5 b6 b7, Type II, Gamma, Hybrid Note: C

4s -4 5s -5s -6 7 -7 8s 8s -8 9s -9s -10 11 -11 12s

263

12s -11 11 -10 -9s 9s -8 8s 8s -7 7 -6 -5s 5s -4 4s

265 Ab Lydian, intervals: 1 2 3 #4 5 6 7, Type III, Gamma, Hybrid Note: C

-4 5s -5s -6 7 -7 8s -8 -8 9s -9s -10 11 -11 12s -12

267

-12 12s -11 11 -10 -9s 9s -8 -8 8s -7 7 -6 -5s 5s -4

269 Bb Mixolydian, intervals: 1 2 3 4 5 6 b7, Type II, Gamma, Hybrid Note: C

1s -1s -2 3 -3 4s -4 5s 5s -5s -6 7 -7 8s -8 9s

Modes of the Major Scales
 tabs for the 12-hole diminished chromatic in A

271

9s -8 8s -7 7 -6 -5s 5s 5s -4 4s -3 3 -2 -1s 1s

273 C Minor/Aeolian, intervals: 1 2 b3 4 5 b6 b7, Type I, Gamma, Hybrid Note: C

2 -2 3 -3 4s -4 5s -5s 6 -6 7 -7 8s -8 9s -9s

275

-9s 9s -8 8s -7 7 -6 6 -5s 5s -4 4s -3 3 -2 2

277 D Locrian, intervals: 1 b2 b3 4 b5 b6 b7, Type III, Gamma, Hybrid Note: C

-2 3 -3 4s -4 5s -5s -6 -6 7 -7 8s -8 9s -9s -10

279

-10 -9s 9s -8 8s -7 7 -6 -6 -5s 5s -4 4s -3 3 -2

281 Bb Major/Ionian, intervals: 1 2 3 4 5 6 7, Type II, Alpha, Hybrid Note: C

1s -1s -2 3 -3 4s -4s 5s 5s -5s -6 7 -7 8s -8s 9s

283

9s -8s 8s -7 7 -6 -5s 5s 5s -4s 4s -3 3 -2 -1s 1s

285 C Dorian, intervals: 1 2 b3 4 5 6 b7, Type I, Alpha, Hybrid Note: C

2 -2 3 -3 4s -4s 5s -5s 6 -6 7 -7 8s -8s 9s -9s

287

-9s 9s -8s 8s -7 7 -6 6 -5s 5s -4s 4s -3 3 -2 2

Modes of the Major Scales
tabs for the 12-hole diminished chromatic in A

289 D Phrygian, intervals: 1 b2 b3 4 5 b6 b7, Type III, Alpha, Hybrid Note: C

291

293 Eb Lydian, intervals: 1 2 3 #4 5 6 7, Type I, Alpha, Hybrid Note: C

295

297 F Mixolydian, intervals: 1 2 3 4 5 6 b7, Type III, Alpha, Hybrid Note: C

299

301 G Minor/Aeolian, intervals: 1 2 b3 4 5 b6 b7, Type II, Alpha, Hybrid Note: C

303

305 A Locrian, intervals: 1 b2 b3 4 b5 b6 b7, Type I, Alpha, Hybrid Note: C

Modes of the Major Scales
tabs for the 12-hole diminished chromatic in A

307

-12s 12s -11 11 -10 -9s 9s -8s -8s 8s -7 7 -6 -5s 5s -4s

309 F Major/Ionian, intervals: 1 2 3 4 5 6 7, Type III, Beta, Hybrid Note: C

-3 4s -4s 5s -5s -6 7s -7 -7 8s -8s 9s -9s -10 11s -11

311

-11 11s -10 -9s 9s -8s 8s -7 -7 7s -6 -5s 5s -4s 4s -3

313 G Dorian, intervals: 1 2 b3 4 5 6 b7, Type II, Beta, Hybrid Note: C

4s -4s 5s -5s -6 7s -7 8s 8s -8s 9s -9s -10 11s -11 12s

315

12s -11 11s -10 -9s 9s -8s 8s 8s -7 7s -6 -5s 5s -4s 4s

317 A Phrygian, intervals: 1 b2 b3 4 5 b6 b7, Type I, Beta, Hybrid Note: C

-4s 5s -5s -6 7s -7 8s -8s -8s 9s -9s -10 11s -11 12s -12s

319

-12s 12s -11 11s -10 -9s 9s -8s -8s 8s -7 7s -6 -5s 5s -4s

321 Bb Lydian, intervals: 1 2 3 #4 5 6 7, Type II, Beta, Hybrid Note: C

1s -1s -2 3s -3 4s -4s 5s 5s -5s -6 7s -7 8s -8s 9s

323

9s -8s 8s -7 7s -6 -5s 5s 5s -4s 4s -3 3s -2 -1s 1s

Modes of the Major Scales
tabs for the 12-hole diminished chromatic in A

325 C Mixolydian, intervals: 1 2 3 4 5 6 b7, Type I, Beta, Hybrid Note: C

2 -2 3s -3 4s -4s 5s -5s 6 -6 7s -7 8s -8s 9s -9s

327

-9s 9s -8s 8s -7 7s -6 6 -5s 5s -4s 4s -3 3s -2 2

329 D Minor/Aeolian, intervals: 1 2 b3 4 5 b6 b7, Type III, Beta, Hybrid Note: C

-2 3s -3 4s -4s 5s -5s -6 -6 7s -7 8s -8s 9s -9s -10

331

-10 -9s 9s -8s 8s -7 7s -6 -6 -5s 5s -4s 4s -3 3s -2

333 E Locrian, intervals: 1 b2 b3 4 b5 b6 b7, Type II, Beta, Hybrid Note: C

3s -3 4s -4s 5s -5s -6 7s 7s -7 8s -8s 9s -9s -10 11s

335

11s -10 -9s 9s -8s 8s -7 7s 7s -6 -5s 5s -4s 4s -3 3s