

Modes of the Major Scales  
tabs for the 12-hole diminished chromatic in Bb

Jason Rogers

Db Major/Ionian, intervals: 1 2 3 4 5 6 7, Type I, Gamma, Hybrid Note: Bb

2 -2 3s -3 4s -4s -5 6 6 -6 7s -7 8s -8s -9 10

3

10 -9 -8s 8s -7 7s -6 6 6 -5 -4s 4s -3 3s -2 2

5 Eb Dorian, intervals: 1 2 b3 4 5 6 b7, Type III, Gamma, Hybrid Note: Bb

-2 3s -3 4s -4s -5 6 -6 -6 7s -7 8s -8s -9 10 -10

7

-10 10 -9 -8s 8s -7 7s -6 -6 6 -5 -4s 4s -3 3s -2

9 F Phrygian, intervals: 1 b2 b3 4 5 b6 b7, Type II, Gamma, Hybrid Note: Bb

3s -3 4s -4s -5 6 -6 7s 7s -7 8s -8s -9 10 -10 11s

11

11s -10 10 -9 -8s 8s -7 7s 7s -6 6 -5 -4s 4s -3 3s

13 Gb Lydian, intervals: 1 2 3 #4 5 6 7, Type III, Gamma, Hybrid Note: Bb

-3 4s -4s -5 6 -6 7s -7 -7 8s -8s -9 10 -10 11s -11

15

-11 11s -10 10 -9 -8s 8s -7 -7 7s -6 6 -5 -4s 4s -3

17 Ab Mixolydian, intervals: 1 2 3 4 5 6 b7, Type II, Gamma, Hybrid Note: Bb

4s -4s -5 6 -6 7s -7 8s 8s -8s -9 10 -10 11s -11 12s

Modes of the Major Scales  
 tabs for the 12-hole diminished chromatic in Bb

19

12s -11 11s -10 10 -9 -8s 8s 8s -7 7s -6 6 -5 -4s 4s

Bb Minor/Aeolian, intervals: 1 2 b3 4 5 b6 b7, Type I, Gamma, Hybrid Note: Bb

21

5 -5 6 -6 7s -7 8s -8s 9 -9 10 -10 11s -11 12s -12s

23

-12s 12s -11 11s -10 10 -9 9 -8s 8s -7 7s -6 6 -5 5

25

C Locrian, intervals: 1 b2 b3 4 b5 b6 b7, Type III, Gamma, Hybrid Note: Bb

-1 2 -2 3s -3 4s -4s -5 -5 6 -6 7s -7 8s -8s -9

27

-9 -8s 8s -7 7s -6 6 -5 -5 -4s 4s -3 3s -2 2 -1

29

Ab Major/Ionian, intervals: 1 2 3 4 5 6 7, Type II, Alpha, Hybrid Note: Bb

4s -4s -5 6 -6 7s -7s 8s 8s -8s -9 10 -10 11s -11s 12s

31

12s -11s 11s -10 10 -9 -8s 8s 8s -7s 7s -6 6 -5 -4s 4s

33

Bb Dorian, intervals: 1 2 b3 4 5 6 b7, Type I, Alpha, Hybrid Note: Bb

1 -1 2 -2 3s -3s 4s -4s 5 -5 6 -6 7s -7s 8s -8s

35

-8s 8s -7s 7s -6 6 -5 5 -4s 4s -3s 3s -2 2 -1 1

**Modes of the Major Scales**  
**tabs for the 12-hole diminished chromatic in Bb**

37 C Phrygian, intervals: 1 b2 b3 4 5 b6 b7, Type III, Alpha, Hybrid Note: Bb

-1 2 -2 3s -3s 4s -4s -5 -5 6 -6 7s -7s 8s -8s -9

39

-9 -8s 8s -7s 7s -6 6 -5 -5 -4s 4s -3s 3s -2 2 -1

41 Db Lydian, intervals: 1 2 3 #4 5 6 7, Type I, Alpha, Hybrid Note: Bb

2 -2 3s -3s 4s -4s -5 6 6 -6 7s -7s 8s -8s -9 10

43

10 -9 -8s 8s -7s 7s -6 6 6 -5 -4s 4s -3s 3s -2 2

45 Eb Mixolydian, intervals: 1 2 3 4 5 6 b7, Type III, Alpha, Hybrid Note: Bb

-2 3s -3s 4s -4s -5 6 -6 -6 7s -7s 8s -8s -9 10 -10

47

-10 10 -9 -8s 8s -7s 7s -6 -6 6 -5 -4s 4s -3s 3s -2

49 F Minor/Aeolian, intervals: 1 2 b3 4 5 b6 b7, Type II, Alpha, Hybrid Note: Bb

3s -3s 4s -4s -5 6 -6 7s 7s -7s 8s -8s -9 10 -10 11s

51

11s -10 10 -9 -8s 8s -7s 7s 7s -6 6 -5 -4s 4s -3s 3s

53 G Locrian, intervals: 1 b2 b3 4 b5 b6 b7, Type I, Alpha, Hybrid Note: Bb

-3s 4s -4s -5 6 -6 7s -7s -7s 8s -8s -9 10 -10 11s -11s

Modes of the Major Scales  
 tabs for the 12-hole diminished chromatic in Bb

55

-11s 11s -10 10 -9 -8s 8s -7s -7s 7s -6 6 -5 -4s 4s -3s

57 Eb Major/Ionian, intervals: 1 2 3 4 5 6 7, Type III, Beta, Hybrid Note: Bb

-2 3s -3s 4s -4s -5 6s -6 -6 7s -7s 8s -8s -9 10s -10

59

-10 10s -9 -8s 8s -7s 7s -6 -6 6s -5 -4s 4s -3s 3s -2

61 F Dorian, intervals: 1 2 b3 4 5 6 b7, Type II, Beta, Hybrid Note: Bb

3s -3s 4s -4s -5 6s -6 7s 7s -7s 8s -8s -9 10s -10 11s

63

11s -10 10s -9 -8s 8s -7s 7s 7s -6 6s -5 -4s 4s -3s 3s

65 G Phrygian, intervals: 1 b2 b3 4 5 b6 b7, Type I, Beta, Hybrid Note: Bb

-3s 4s -4s -5 6s -6 7s -7s -7s 8s -8s -9 10s -10 11s -11s

67

-11s 11s -10 10s -9 -8s 8s -7s -7s 7s -6 6s -5 -4s 4s -3s

69 Ab Lydian, intervals: 1 2 3 #4 5 6 7, Type II, Beta, Hybrid Note: Bb

4s -4s -5 6s -6 7s -7s 8s 8s -8s -9 10s -10 11s -11s 12s

71

12s -11s 11s -10 10s -9 -8s 8s 8s -7s 7s -6 6s -5 -4s 4s

Modes of the Major Scales  
 tabs for the 12-hole diminished chromatic in Bb

73 Bb Mixolydian, intervals: 1 2 3 4 5 6 b7, Type I, Beta, Hybrid Note: Bb

1 -1 2s -2 3s -3s 4s -4s 5 -5 6s -6 7s -7s 8s -8s

-8s 8s -7s 7s -6 6s -5 5 -4s 4s -3s 3s -2 2s -1 1

77 C Minor/Aeolian, intervals: 1 2 b3 4 5 b6 b7, Type III, Beta, Hybrid Note: Bb

-1 2s -2 3s -3s 4s -4s -5 -5 6s -6 7s -7s 8s -8s -9

-9 -8s 8s -7s 7s -6 6s -5 -5 -4s 4s -3s 3s -2 2s -1

81 D Locrian, intervals: 1 b2 b3 4 b5 b6 b7, Type II, Beta, Hybrid Note: Bb

2s -2 3s -3s 4s -4s -5 6s 6s -6 7s -7s 8s -8s -9 10s

10s -9 -8s 8s -7s 7s -6 6s 6s -5 -4s 4s -3s 3s -2 2s

85 Bb Major/Ionian, intervals: 1 2 3 4 5 6 7, Type I, Gamma, Hybrid Note: G

1 -1 2s -2 3s -3s -4 5 5 -5 6s -6 7s -7s -8 9

9 -8 -7s 7s -6 6s -5 5 5 -4 -3s 3s -2 2s -1 1

89 C Dorian, intervals: 1 2 b3 4 5 6 b7, Type III, Gamma, Hybrid Note: G

-1 2s -2 3s -3s -4 5 -5 -5 6s -6 7s -7s -8 9 -9

Modes of the Major Scales  
 tabs for the 12-hole diminished chromatic in Bb

91

-9 9 -8 -7s 7s -6 6s -5 -5 5 -4 -3s 3s -2 2s -1

93 D Phrygian, intervals: 1 b2 b3 4 5 b6 b7, Type II, Gamma, Hybrid Note: G

2s -2 3s -3s -4 5 -5 6s 6s -6 7s -7s -8 9 -9 10s

95

10s -9 9 -8 -7s 7s -6 6s 6s -5 5 -4 -3s 3s -2 2s

97 Eb Lydian, intervals: 1 2 3 #4 5 6 7, Type III, Gamma, Hybrid Note: G

-2 3s -3s -4 5 -5 6s -6 -6 7s -7s -8 9 -9 10s -10

99

-10 10s -9 9 -8 -7s 7s -6 -6 6s -5 5 -4 -3s 3s -2

101 F Mixolydian, intervals: 1 2 3 4 5 6 b7, Type II, Gamma, Hybrid Note: G

3s -3s -4 5 -5 6s -6 7s 7s -7s -8 9 -9 10s -10 11s

103

11s -10 10s -9 9 -8 -7s 7s 7s -6 6s -5 5 -4 -3s 3s

105 G Minor/Aeolian, intervals: 1 2 b3 4 5 b6 b7, Type I, Gamma, Hybrid Note: G#

4 -4 5 -5 6s -6 7s -7s 8 -8 9 -9 10s -10 11s -11s

107

-11s 11s -10 10s -9 9 -8 8 -7s 7s -6 6s -5 5 -4 4

Modes of the Major Scales  
 tabs for the 12-hole diminished chromatic in Bb

109 A Locrian, intervals: 1 b2 b3 4 b5 b6 b7, Type III, Gamma, Hybrid Note: G

111

113 F Major/Ionian, intervals: 1 2 3 4 5 6 7, Type II, Alpha, Hybrid Note: G

115

117 G Dorian, intervals: 1 2 b3 4 5 6 b7, Type I, Alpha, Hybrid Note: G

119

121 A Phrygian, intervals: 1 b2 b3 4 5 b6 b7, Type III, Alpha, Hybrid Note: G

123

125 Bb Lydian, intervals: 1 2 3 #4 5 6 7, Type I, Alpha, Hybrid Note: G

Modes of the Major Scales  
 tabs for the 12-hole diminished chromatic in Bb

127

9 -8 -7s 7s -6s 6s -5 5 5 -4 -3s 3s -2s 2s -1 1

129 C Mixolydian, intervals: 1 2 3 4 5 6 b7, Type III, Alpha, Hybrid Note: G

-1 2s -2s 3s -3s -4 5 -5 -5 6s -6s 7s -7s -8 9 -9

131

-9 9 -8 -7s 7s -6s 6s -5 -5 5 -4 -3s 3s -2s 2s -1

133 D Minor/Aeolian, intervals: 1 2 b3 4 5 b6 b7, Type II, Alpha, Hybrid Note: G

2s -2s 3s -3s -4 5 -5 6s 6s -6s 7s -7s -8 9 -9 10s

135

10s -9 9 -8 -7s 7s -6s 6s 6s -5 5 -4 -3s 3s -2s 2s

137 E Locrian, intervals: 1 b2 b3 4 b5 b6 b7, Type I, Alpha, Hybrid Note: G

-2s 3s -3s -4 5 -5 6s -6s -6s 7s -7s -8 9 -9 10s -10s

139

-10s 10s -9 9 -8 -7s 7s -6s -6s 6s -5 5 -4 -3s 3s -2s

141 C Major/Ionian, intervals: 1 2 3 4 5 6 7, Type III, Beta, Hybrid Note: G

-1 2s -2s 3s -3s -4 5s -5 -5 6s -6s 7s -7s -8 9s -9

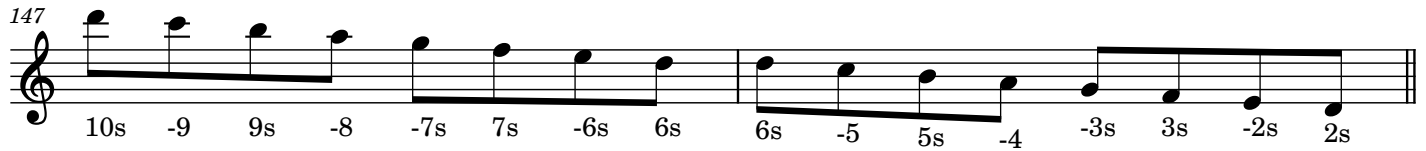
143

-9 9s -8 -7s 7s -6s 6s -5 -5 5s -4 -3s 3s -2s 2s -1



Modes of the Major Scales  
 tabs for the 12-hole diminished chromatic in Bb

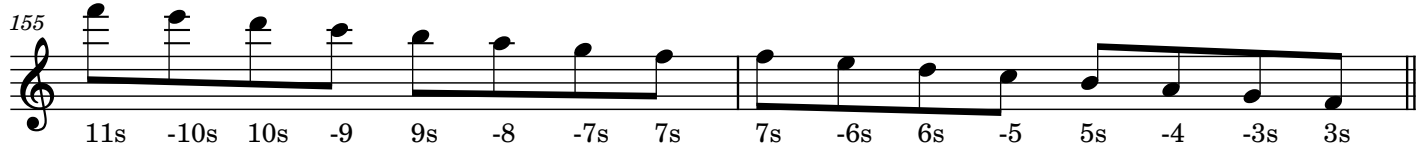
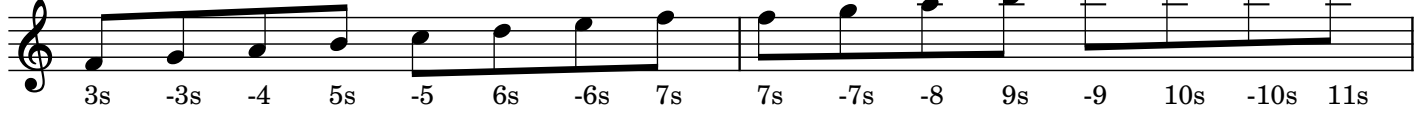
145 D Dorian, intervals: 1 2 b3 4 5 6 b7, Type II, Beta, Hybrid Note: G



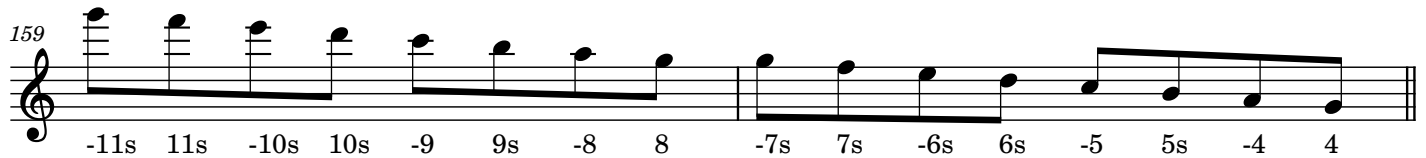
149 E Phrygian, intervals: 1 b2 b3 4 5 b6 b7, Type I, Beta, Hybrid Note: G



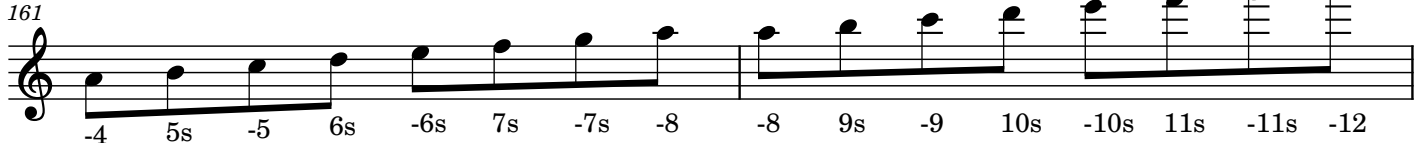
153 F Lydian, intervals: 1 2 3 #4 5 6 7, Type II, Beta, Hybrid Note: G



157 G Mixolydian, intervals: 1 2 3 4 5 6 b7, Type I, Beta, Hybrid Note: G



161 A Minor/Aeolian, intervals: 1 2 b3 4 5 b6 b7, Type III, Beta, Hybrid Note: G



Modes of the Major Scales  
tabs for the 12-hole diminished chromatic in Bb

163

-12 -11s 11s -10s 10s -9 9s -8 -8 -7s 7s -6s 6s -5 5s -4

165 B Locrian, intervals: 1 b2 b3 4 b5 b6 b7, Type II, Beta, Hybrid Note: G

1s -1 2s -2s 3s -3s -4 5s 5s -5 6s -6s 7s -7s -8 9s

167

9s -8 -7s 7s -6s 6s -5 5s 5s -4 -3s 3s -2s 2s -1 1s

169 G Major/Ionian, intervals: 1 2 3 4 5 6 7, Type I, Gamma, Hybrid Note: E

4 -4 5s -5 6s -6s -7 8 8 -8 9s -9 10s -10s -11 12

171

12 -11 -10s 10s -9 9s -8 8 8 -7 -6s 6s -5 5s -4 4

173 A Dorian, intervals: 1 2 b3 4 5 6 b7, Type III, Gamma, Hybrid Note: E

-4 5s -5 6s -6s -7 8 -8 -8 9s -9 10s -10s -11 12 -12

175

-12 12 -11 -10s 10s -9 9s -8 -8 8 -7 -6s 6s -5 5s -4

177 B Phrygian, intervals: 1 b2 b3 4 5 b6 b7, Type II, Gamma, Hybrid Note: E

1s -1 2s -2s -3 4 -4 5s 5s -5 6s -6s -7 8 -8 9s

179

9s -8 8 -7 -6s 6s -5 5s 5s -4 4 -3 -2s 2s -1 1s

Modes of the Major Scales  
 tabs for the 12-hole diminished chromatic in Bb

181 C Lydian, intervals: 1 2 3 #4 5 6 7, Type III, Gamma, Hybrid Note: E

-1 2s -2s -3 4 -4 5s -5 -5 6s -6s -7 8 -8 9s -9

183

-9 9s -8 8 -7 -6s 6s -5 -5 5s -4 4 -3 -2s 2s -1

185 D Mixolydian, intervals: 1 2 3 4 5 6 b7, Type II, Gamma, Hybrid Note: E

2s -2s -3 4 -4 5s -5 6s 6s -6s -7 8 -8 9s -9 10s

187

10s -9 9s -8 8 -7 -6s 6s 6s -5 5s -4 4 -3 -2s 2s

189 E Minor/Aeolian, intervals: 1 2 b3 4 5 b6 b7, Type I, Gamma, Hybrid Note: E

3 -3 4 -4 5s -5 6s -6s 7 -7 8 -8 9s -9 10s -10s

191

-10s 10s -9 9s -8 8 -7 7 -6s 6s -5 5s -4 4 -3 3

193 F# Locrian, intervals: 1 b2 b3 4 b5 b6 b7, Type III, Gamma, Hybrid Note: E

-3 4 -4 5s -5 6s -6s -7 -7 8 -8 9s -9 10s -10s -11

195

-11 -10s 10s -9 9s -8 8 -7 -7 -6s 6s -5 5s -4 4 -3

197 D Major/Ionian, intervals: 1 2 3 4 5 6 7, Type II, Alpha, Hybrid Note: E

2s -2s -3 4 -4 5s -5s 6s 6s -6s -7 8 -8 9s -9s 10s

Modes of the Major Scales  
 tabs for the 12-hole diminished chromatic in Bb

199

10s -9s 9s -8 8 -7 -6s 6s 6s -5s 5s -4 4 -3 -2s 2s

201 E Dorian, intervals: 1 2 b3 4 5 6 b7, Type I, Alpha, Hybrid Note: E

3 -3 4 -4 5s -5s 6s -6s 7 -7 8 -8 9s -9s 10s -10s

203

-10s 10s -9s 9s -8 8 -7 7 -6s 6s -5s 5s -4 4 -3 3

205 F# Phrygian, intervals: 1 b2 b3 4 5 b6 b7, Type III, Alpha, Hybrid Note: E

-3 4 -4 5s -5s 6s -6s -7 -7 8 -8 9s -9s 10s -10s -11

207

-11 -10s 10s -9s 9s -8 8 -7 -7 -6s 6s -5s 5s -4 4 -3

209 G Lydian, intervals: 1 2 3 #4 5 6 7, Type I, Alpha, Hybrid Note: E

4 -4 5s -5s 6s -6s -7 8 8 -8 9s -9s 10s -10s -11 12

211

12 -11 -10s 10s -9s 9s -8 8 8 -7 -6s 6s -5s 5s -4 4

213 A Mixolydian, intervals: 1 2 3 4 5 6 b7, Type III, Alpha, Hybrid Note: E

-4 5s -5s 6s -6s -7 8 -8 -8 9s -9s 10s -10s -11 12 -12

215

-12 12 -11 -10s 10s -9s 9s -8 -8 8 -7 -6s 6s -5s 5s -4

Modes of the Major Scales  
 tabs for the 12-hole diminished chromatic in Bb

217 B Minor/Aeolian, intervals: 1 2 b3 4 5 b6 b7, Type II, Alpha, Hybrid Note: E

1s -1s 2s -2s -3 4 -4 5s 5s -5s 6s -6s -7 8 -8 9s

219

9s -8 8 -7 -6s 6s -5s 5s 5s -4 4 -3 -2s 2s -1s 1s

221 C# Locrian, intervals: 1 b2 b3 4 b5 b6 b7, Type I, Alpha, Hybrid Note: E

-1s 2s -2s -3 4 -4 5s -5s -5s 6s -6s -7 8 -8 9s -9s

223

-9s 9s -8 8 -7 -6s 6s -5s -5s 5s -4 4 -3 -2s 2s -1s

225 A Major/Ionian, intervals: 1 2 3 4 5 6 7, Type III, Beta, Hybrid Note: E

-4 5s -5s 6s -6s -7 8s -8 -8 9s -9s 10s -10s -11 12s -12

227

-12 12s -11 -10s 10s -9s 9s -8 -8 8s -7 -6s 6s -5s 5s -4

229 B Dorian, intervals: 1 2 b3 4 5 6 b7, Type II, Beta, Hybrid Note: E

1s -1s 2s -2s -3 4s -4 5s 5s -5s 6s -6s -7 8s -8 9s

231

9s -8 8s -7 -6s 6s -5s 5s 5s -4 4s -3 -2s 2s -1s 1s

233 C# Phrygian, intervals: 1 b2 b3 4 5 b6 b7, Type I, Beta, Hybrid Note: E

-1s 2s -2s -3 4s -4 5s -5s -5s 6s -6s -7 8s -8 9s -9s

Modes of the Major Scales  
tabs for the 12-hole diminished chromatic in Bb

235

-9s 9s -8 8s -7 -6s 6s -5s -5s 5s -4 4s -3 -2s 2s -1s

237 D Lydian, intervals: 1 2 3 #4 5 6 7, Type II, Beta, Hybrid Note: E

2s -2s -3 4s -4 5s -5s 6s 6s -6s -7 8s -8 9s -9s 10s

239

10s -9s 9s -8 8s -7 -6s 6s 6s -5s 5s -4 4s -3 -2s 2s

241 E Mixolydian, intervals: 1 2 3 4 5 6 b7, Type I, Beta, Hybrid Note: E

3 -3 4s -4 5s -5s 6s -6s 7 -7 8s -8 9s -9s 10s -10s

243

-10s 10s -9s 9s -8 8s -7 7 -6s 6s -5s 5s -4 4s -3 3

245 F# Minor/Aeolian, intervals: 1 2 b3 4 5 b6 b7, Type III, Beta, Hybrid Note: E

-3 4s -4 5s -5s 6s -6s -7 -7 8s -8 9s -9s 10s -10s -11

247

-11 -10s 10s -9s 9s -8 8s -7 -7 -6s 6s -5s 5s -4 4s -3

249 G# Locrian, intervals: 1 b2 b3 4 b5 b6 b7, Type II, Beta, Hybrid Note: E

4s -4 5s -5s 6s -6s -7 8s 8s -8 9s -9s 10s -10s -11 12s

251

12s -11 -10s 10s -9s 9s -8 8s 8s -7 -6s 6s -5s 5s -4 4s

Modes of the Major Scales  
tabs for the 12-hole diminished chromatic in Bb

253 E Major/Ionian, intervals: 1 2 3 4 5 6 7, Type I, Gamma, Hybrid Note: C#

3 -3 4s -4 5s -5s -6 7 7 -7 8s -8 9s -9s -10 11

11 -10 -9s 9s -8 8s -7 7 7 -6 -5s 5s -4 4s -3 3

257 F# Dorian, intervals: 1 2 b3 4 5 6 b7, Type III, Gamma, Hybrid Note: C#

-3 4s -4 5s -5s -6 7 -7 -7 8s -8 9s -9s -10 11 -11

-11 11 -10 -9s 9s -8 8s -7 -7 7 -6 -5s 5s -4 4s -3

261 G# Phrygian, intervals: 1 b2 b3 4 5 b6 b7, Type II, Gamma, Hybrid Note: C#

4s -4 5s -5s -6 7 -7 8s 8s -8 9s -9s -10 11 -11 12s

12s -11 11 -10 -9s 9s -8 8s 8s -7 7 -6 -5s 5s -4 4s

265 A Lydian, intervals: 1 2 3 #4 5 6 7, Type III, Gamma, Hybrid Note: C#

-4 5s -5s -6 7 -7 8s -8 -8 9s -9s -10 11 -11 12s -12

-12 12s -11 11 -10 -9s 9s -8 -8 8s -7 7 -6 -5s 5s -4

269 B Mixolydian, intervals: 1 2 3 4 5 6 b7, Type II, Gamma, Hybrid Note: C#

1s -1s -2 3 -3 4s -4 5s 5s -5s -6 7 -7 8s -8 9s

Modes of the Major Scales  
tabs for the 12-hole diminished chromatic in Bb

271

9s -8 8s -7 7 -6 -5s 5s 5s -4 4s -3 3 -2 -1s 1s

273 C# Minor/Aeolian, intervals: 1 2 b3 4 5 b6 b7, Type I, Gamma, Hybrid Note: C#

2 -2 3 -3 4s -4 5s -5s 6 -6 7 -7 8s -8 9s -9s

275

-9s 9s -8 8s -7 7 -6 6 -5s 5s -4 4s -3 3 -2 2

277 D# Locrian, intervals: 1 b2 b3 4 b5 b6 b7, Type III, Gamma, Hybrid Note: C#

-2 3 -3 4s -4 5s -5s -6 -6 7 -7 8s -8 9s -9s -10

279

-10 -9s 9s -8 8s -7 7 -6 -6 -5s 5s -4 4s -3 3 -2

281 B Major/Ionian, intervals: 1 2 3 4 5 6 7, Type II, Alpha, Hybrid Note: C#

1s -1s -2 3 -3 4s -4s 5s 5s -5s -6 7 -7 8s -8s 9s

283

9s -8s 8s -7 7 -6 -5s 5s 5s -4s 4s -3 3 -2 -1s 1s

285 C# Dorian, intervals: 1 2 b3 4 5 6 b7, Type I, Alpha, Hybrid Note: C#

2 -2 3 -3 4s -4s 5s -5s 6 -6 7 -7 8s -8s 9s -9s

287

-9s 9s -8s 8s -7 7 -6 6 -5s 5s -4s 4s -3 3 -2 2



Modes of the Major Scales  
tabs for the 12-hole diminished chromatic in Bb

289 D# Phrygian, intervals: 1 b2 b3 4 5 b6 b7, Type III, Alpha, Hybrid Note: C#

-2 3 -3 4s -4s 5s -5s -6 -6 7 -7 8s -8s 9s -9s -10

291

-10 -9s 9s -8s 8s -7 7 -6 -6 -5s 5s -4s 4s -3 3 -2

293 E Lydian, intervals: 1 2 3 #4 5 6 7, Type I, Alpha, Hybrid Note: C#

3 -3 4s -4s 5s -5s -6 7 7 -7 8s -8s 9s -9s -10 11

295

11 -10 -9s 9s -8s 8s -7 7 7 -6 -5s 5s -4s 4s -3 3

297 F# Mixolydian, intervals: 1 2 3 4 5 6 b7, Type III, Alpha, Hybrid Note: C#

-3 4s -4s 5s -5s -6 7 -7 -7 8s -8s 9s -9s -10 11 -11

299

-11 11 -10 -9s 9s -8s 8s -7 -7 7 -6 -5s 5s -4s 4s -3

301 G# Minor/Aeolian, intervals: 1 2 b3 4 5 b6 b7, Type II, Alpha, Hybrid Note: C#

4s -4s 5s -5s -6 7 -7 8s 8s -8s 9s -9s -10 11 -11 12s

303

12s -11 11 -10 -9s 9s -8s 8s 8s -7 7 -6 -5s 5s -4s 4s

305 A# Locrian, intervals: 1 b2 b3 4 b5 b6 b7, Type I, Alpha, Hybrid Note: C#

-4s 5s -5s -6 7 -7 8s -8s -8s 9s -9s -10 11 -11 12s -12s

Modes of the Major Scales  
tabs for the 12-hole diminished chromatic in Bb

307

-12s 12s -11 11 -10 -9s 9s -8s -8s 8s -7 7 -6 -5s 5s -4s

309

Gb Major/Ionian, intervals: 1 2 3 4 5 6 7, Type III, Beta, Hybrid Note: Db

-3 4s -4s 5s -5s -6 7s -7 -7 8s -8s 9s -9s -10 11s -11

311

-11 11s -10 -9s 9s -8s 8s -7 -7 7s -6 -5s 5s -4s 4s -3

313

Ab Dorian, intervals: 1 2 b3 4 5 6 b7, Type II, Beta, Hybrid Note: Db

4s -4s 5s -5s -6 7s -7 8s 8s -8s 9s -9s -10 11s -11 12s

315

12s -11 11s -10 -9s 9s -8s 8s 8s -7 7s -6 -5s 5s -4s 4s

317

Bb Phrygian, intervals: 1 b2 b3 4 5 b6 b7, Type I, Beta, Hybrid Note: Db

-4s 5s -5s -6 7s -7 8s -8s -8s 9s -9s -10 11s -11 12s -12s

319

-12s 12s -11 11s -10 -9s 9s -8s -8s 8s -7 7s -6 -5s 5s -4s

321

Cb Lydian, intervals: 1 2 3 #4 5 6 7, Type II, Beta, Hybrid Note: Db

1s -1s -2 3s -3 4s -4s 5s 5s -5s -6 7s -7 8s -8s 9s

323

9s -8s 8s -7 7s -6 -5s 5s 5s -4s 4s -3 3s -2 -1s 1s

Modes of the Major Scales  
tabs for the 12-hole diminished chromatic in Bb

325 Db Mixolydian, intervals: 1 2 3 4 5 6 b7, Type I, Beta, Hybrid Note: Db

2 -2 3s -3 4s -4s 5s -5s 6 -6 7s -7 8s -8s 9s -9s

327

-9s 9s -8s 8s -7 7s -6 6 -5s 5s -4s 4s -3 3s -2 2

329 Eb Minor/Aeolian, intervals: 1 2 b3 4 5 b6 b7, Type III, Beta, Hybrid Note: Db

-2 3s -3 4s -4s 5s -5s -6 -6 7s -7 8s -8s 9s -9s -10

331

-10 -9s 9s -8s 8s -7 7s -6 -6 -5s 5s -4s 4s -3 3s -2

333 F Locrian, intervals: 1 b2 b3 4 b5 b6 b7, Type II, Beta, Hybrid Note: Db

3s -3 4s -4s 5s -5s -6 7s 7s -7 8s -8s 9s -9s -10 11s

335

11s -10 -9s 9s -8s 8s -7 7s 7s -6 -5s 5s -4s 4s -3 3s